

SPECIFICATIONS:

- FREQUENCY: 0.5 GHz TO 18 GHz
- INSERTION LOSS: REFLECTIVE: 3.0db
ABSORPTIVE: 3.75db
- ISOLATION: 0.5 GHz TO 2 GHz: 60db
2 GHz TO 18 GHz: 70db
- VSWR: REFLECTIVE IN/OUT: 2.0:1
ABSORPTIVE IN/OUT: 2.0:1
ABSORPTIVE OUT/OFF: 2.0:1
- SPEED: RISE: 10ns TYPICAL, 15ns MAX.
FALL: 10ns TYPICAL, 15ns MAX.
DELAY ON: 75ns TYPICAL, 100ns MAX.
DELAY OFF: 75ns TYPICAL, 100ns MAX.
- POWER INPUT: (CW)+20dBm (STANDARD), +10 dBm (HIGH SPEED)
- SURVIVAL POWER: 1 WATT CW, 10 WATTS PEAK 1 usec
- CONTROL: TTL LOGIC "0"=ON "1"=OFF
- POWER SUPPLY: +5V @ 200 mA MAX.
-5V @ 75mA MAX.(RELECTIVE)
100mA MAX.(ABSORPTIVE/NON-REFLECTIVE)

OPTIONS:

- INDEPENDENT CONTROL WITH SOLDER PIN STANDARD
 DEC-SP 2 BIT DECODER WITH SOLDER PIN
 10M18 10 MHz TO 18 GHz (INSERTION LOSS INCREASES BY 1.5db AT 10 MHz AND 0.5db AT 18 GHz)
 100M18 100 MHz TO 18 GHz (INSERTION LOSS INCREASES BY 1.5db AT 100 MHz AND 0.5db AT 18 GHz)
 118 1 GHz TO 18 GHz (NO CHANGE IN INSERTION LOSS)
 218 2 GHz TO 18 GHz (NO CHANGE IN INSERTION LOSS)
 412 4 GHz TO 12.4 GHz (NO CHANGE IN INSERTION LOSS)
 618 6 GHz TO 18 GHz (NO CHANGE IN INSERTION LOSS)
 1218 12 GHz TO 18 GHz (NO CHANGE IN INSERTION LOSS)
 100M20 100 MHz TO 20 GHz (INSERTION LOSS INCREASES BY 1.5db AT 100 MHz AND 1.0db AT 20 GHz)
 220 2 GHz TO 20 GHz (INSERTION LOSS INCREASES BY 1.0db AT 20 GHz)
 1020 10 GHz TO 20 GHz (INSERTION LOSS INCREASES BY 1.0db AT 20 GHz)
 B01 -12V POWER SUPPLIES
 B02 -15V POWER SUPPLIES
 B03 REVERSE LOGIC "1"=DN "0"=OFF
 B04 DRIVERLESS, CURRENT CONTROLLED
 B05 HIGH SPEED, TURNON/TURNOFF 25 nsec MAXIMUM WHEN APPLICABLE
 B06 HIGH POWER - SPECIFY CW POWER, PEAK POWER, PULSE WIDTH, DUTY CYCLE, RF FREQUENCY AND BANDWIDTH
 B07 CUSTOM DESIGNED PRODUCT- SPECIFY INITIALS OF CUSTOMER
 B08 LOW VIDEO TRANSIENTS - SPECIFY VIDEO BANDWIDTH
 B09 LOW INSERTION LOSS VERSION
 B10 HIGHER ISOLATION VERSION

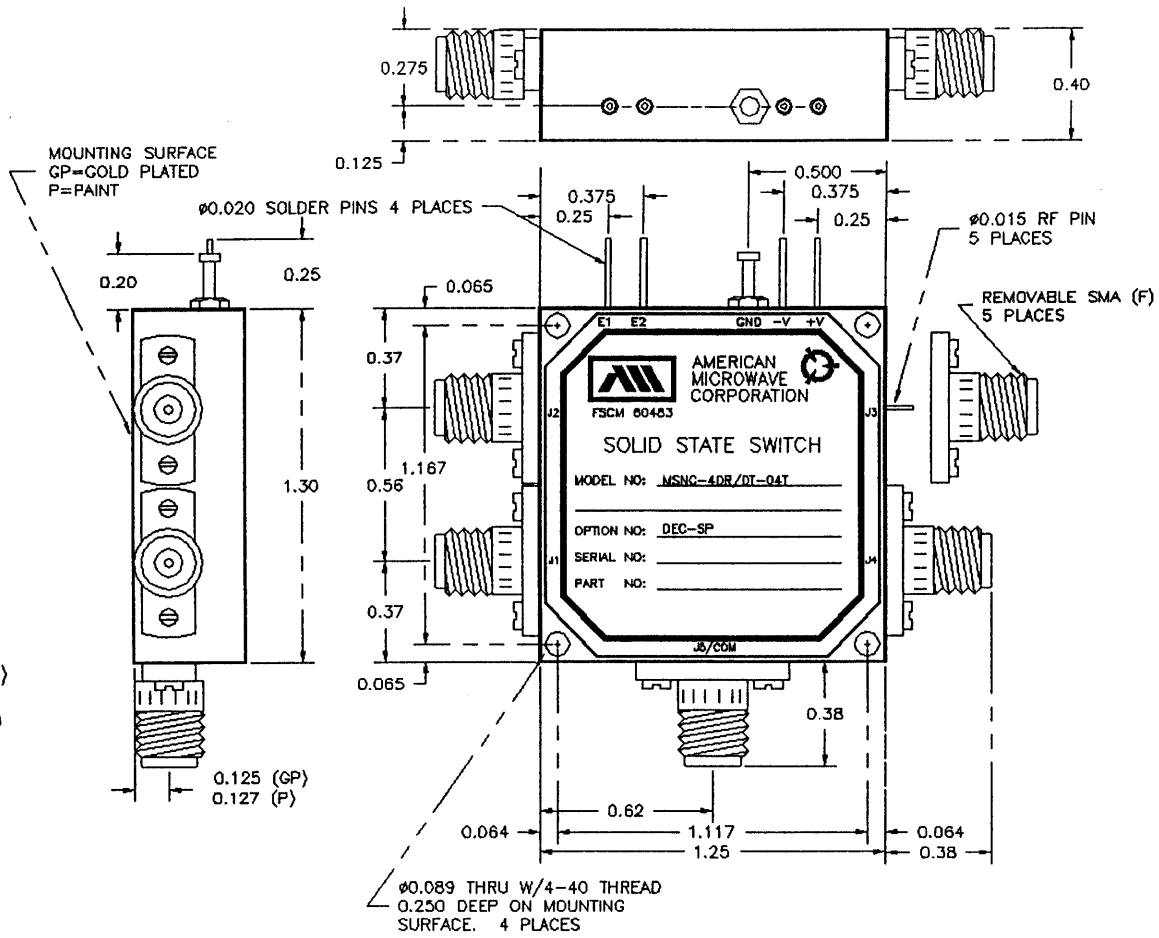
ENVIRONMENTAL RATINGS:

- TEMPERATURE: -55°C TO +85°C (OPERATING)
-65°C TO +125°C (STORAGE)
- HUMIDITY: MIL-STD-202F, METHOD 103B COND. B
- SHOCK: MIL-STD-202F, METHOD 213B COND. B
- VIBRATION: MIL-STD-202F, METHOD 204D COND. B
- ALTITUDE: MIL-STD-202F, METHOD 105C COND. B
- TEMPERATURE CYCLE: MIL-STD-202F, METHOD 107D COND. A

NOTE: THE ABOVE SPECIFICATIONS ARE SUBJECT TO CHANGE OR REVISION

ALL DIMENSIONS ARE IN INCHES
 TOLERANCES:
 X.XX ±0.020
 X.XXX ±0.010

| REVISIONS | | | | |
|-----------|------|------------------|---------|----------|
| ZONE | REV. | DESCRIPTION | DATE | APPROVED |
| | | ORIGINAL RELEASE | 1/23/98 | |



| | | | | |
|-----------|----------|------------|--|--------|
| APPROVALS | | DATE | TITLE | |
| DRAWN | WSP | 1/23/98 | OUTLINE DRAWING | |
| CHECKED | L.A. | 1/28/98 | MSNC-4DR/DT-04T-DEC-SP | |
| ISSUED | | | REFLECTIVE OR NON-REFLECTIVE/ABSORPTIVE SOLID STATE SWITCH | |
| SIZE | FSCM NO. | DWG NO. | REV. | |
| A | 60483 | 100-4219-2 | | |
| SCALE | N/S | | SHEET | 1 of 1 |